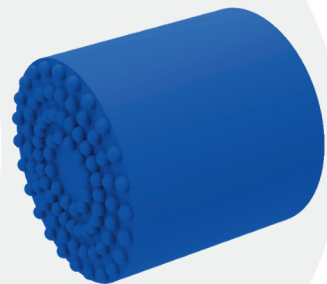


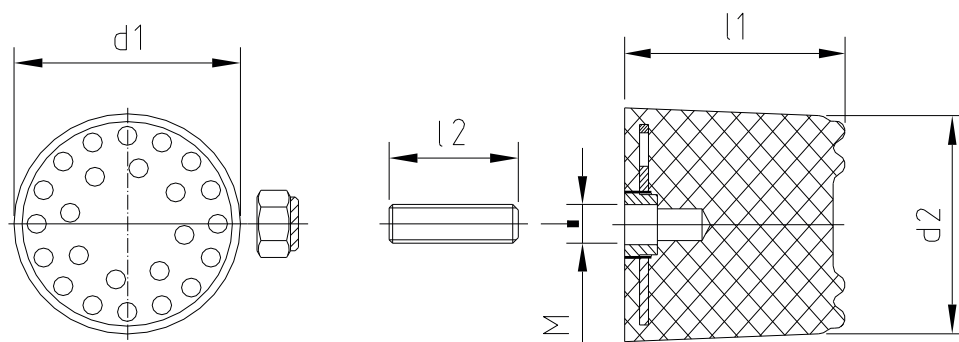


Sure to be Safe

**Cellular Plastic Buffers
Type KPZ**



Cellular plastic buffers type KPZ



Material

Mixed cellular polyether urethane
PUR
500 - 600 kg / m³

Pin: 8.8

These buffers are not usable as springs!

Resistance

Polyetherurethane is suited for the temperature range -40 °C up to +80 °C. Transient temperature peaks up to +110 °C are possible. The material is resistant to oils, fats and other chemicals and has a good resistance to hydrolysis too.

Size				Energy	Stroke	End force	End force	Weight
d1	l2	l2	M	kJ (max) ^{***}	mm [*]	kN ^{**}	kN (max) ^{***}	kg
KPZ70	66	40	M12	0,9	46,2	6	37	0,4
KPZ100	100	45	M12	20,6	70	27	70	0,8
KPZ130	120	55	M12	5,1	84	45	105	1,2
KPZ160	150	55	M12	9,2	105	65	150	1,8
KPZ210	200	85	M20	20	140	56	270	4,1

* Recommended maximum deformation (70 % of H)

** At recommended max. deformation and 120 m/min

*** Data for impact speed of 240 m/min

For impact speeds < 240 m/min max. energy can be determined with the characteristic curves

Example for the calculation of the kinetic energy [KNm] and the selection process of a bump stop

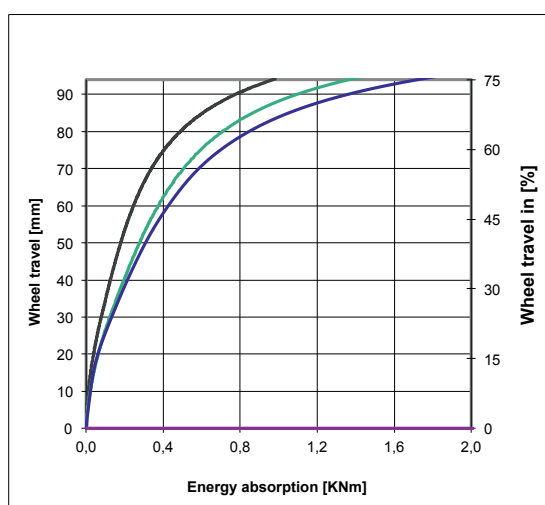
Application: Mass against impact

Calculation formula: $W = 1/2 m v^2$

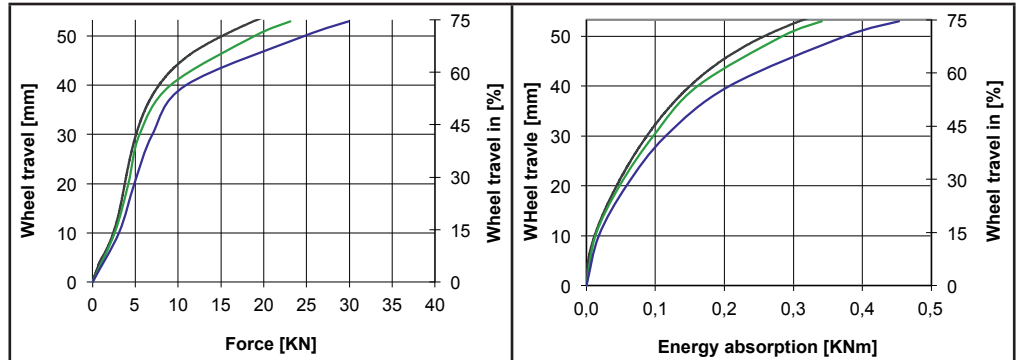
Characteristics: Mass $m = 2.000$ kg
Velocity $v = 1.0$ m/sec
Deformation % = 70 %

Calculation: $W = 1/2 \times 200 \times 1.0$
 $= 1.000$ Nm
 $= 1.0$ KNm

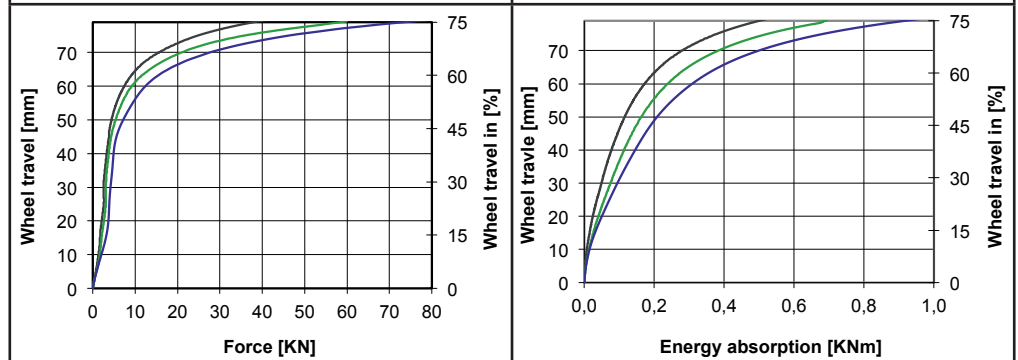
Selection: Bump stop $\varnothing 130 \times 125$ mm



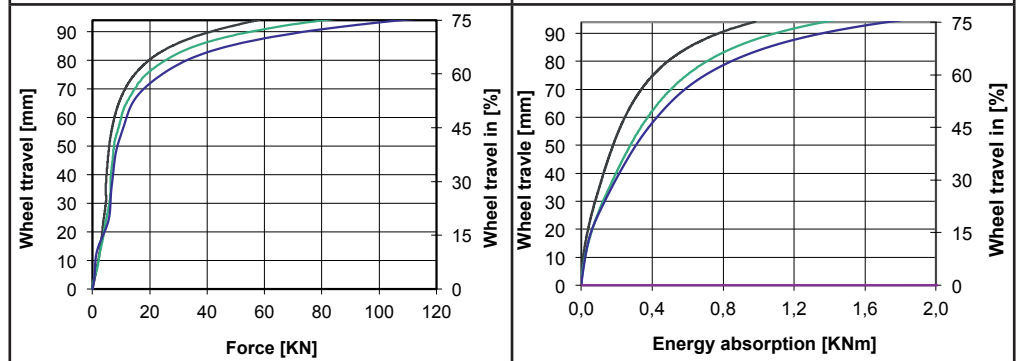
KPZ70



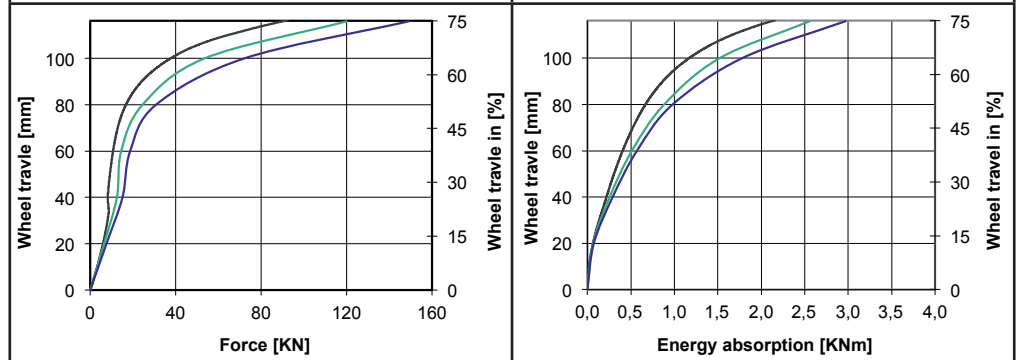
KPZ100



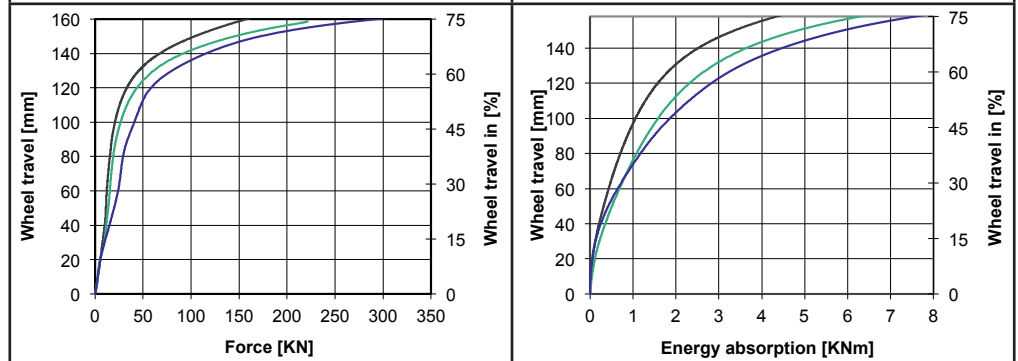
KPZ130

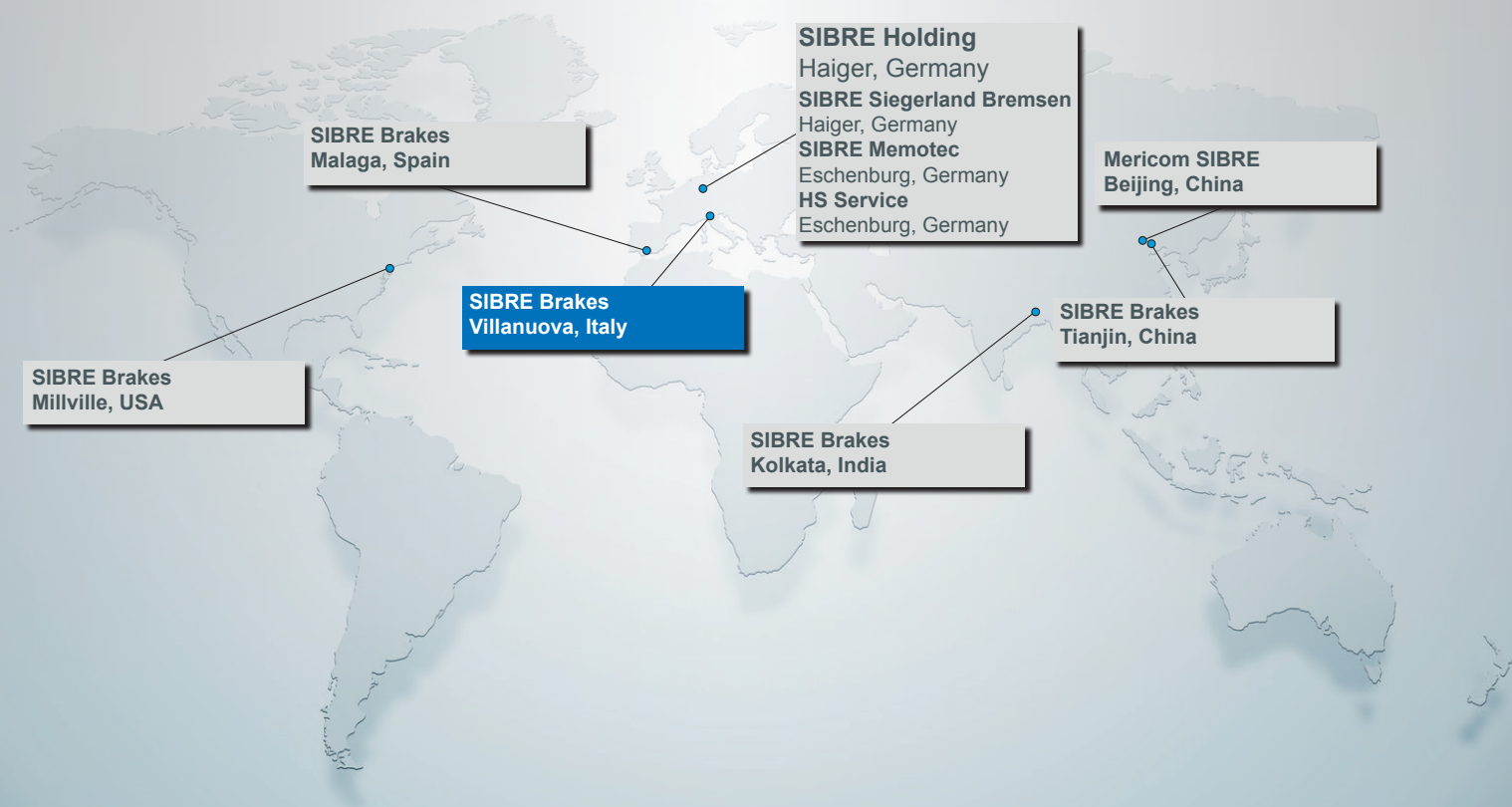


KPZ160



KPZ210





SIBRE Italia s.r.l.

Via Fibbia 1 • I-25080 Villanuova sul Clisi Bs
 phone +39 0365 63699 • fax +39 0365 556062
 mail info@sibre.it • home www.sibre.it



Siegerland Bremsen