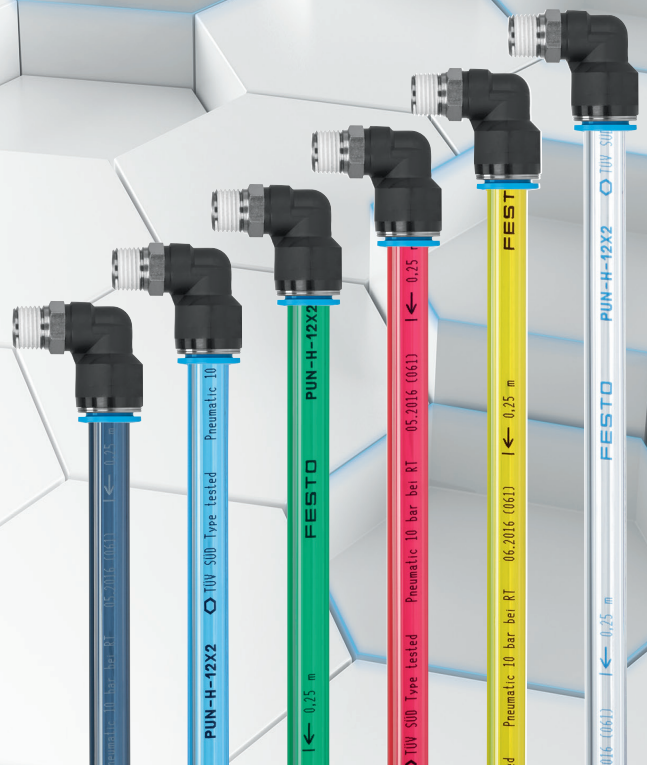
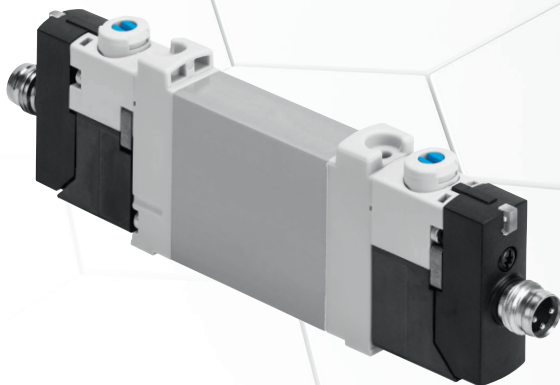
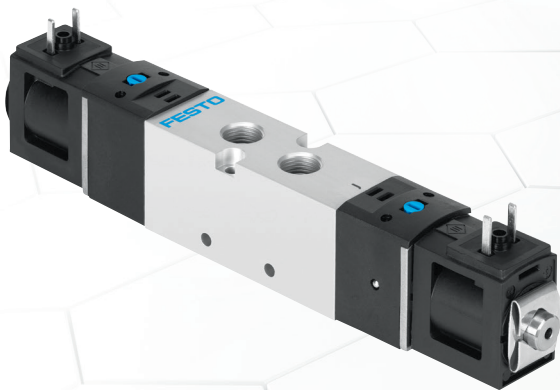


Products for Your Everyday Automation Needs



Your first choice products for simple, cost-effective pneumatic control

Mini slide DGST



The smallest of its kind on the market, but big in performance and precision

A real space-saver: the compact and short slide unit features integrated cushioning components and sensor mounts. The mini slide delivers maximum precision across the entire stroke thanks to the combination of yoke and slide in one part and the hard-wearing recirculating ball bearing guide underneath it. The large range of cushioning options together with the use of position transmitters opens up numerous applications.

Cushioning

- Elastic cushioning at both ends, no end-position adjustment
- Elastic cushioning at both ends, non-adjustable, with end-position adjustment
- Shock absorbers at both ends, self-adjusting, with end-position adjustment

Suitable industries

- Electronics and light assembly
- Machine building
- Handling technology

Areas of application

- Pick and Place handling units
- Piggyback handling units
- Precise positioning
- Precise press-fitting

Guided drive DFM



A true guiding light!

The guided drive DFM knows how to give and take. As robust as it is, it will extend a helping hand whenever you need it to. It can withstand high torques under the toughest of conditions. In fact, its force-to-installation space ratio has been so well designed that it is capable of delivering the same force as other guided drives but in the next size down! This saves money, energy and space.

Areas of applications

- Excellent operational stability compared to standard drives
- High resistance to torques and lateral forces
- Good for tasks involving clamping, stopping, pushing, pulling, restraining, holding, cutting, stopping and separating
- Effortlessly transports and lifts loads over 200 kg, both powerfully and dynamically

Compact cylinder ADN-S



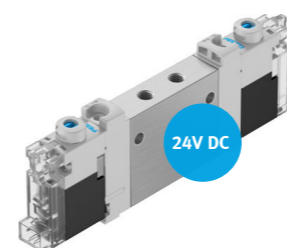
The smallest compact cylinder for micro movements

The compact cylinder series ADN-S is optimised in terms of installation space. Its strong point is its design, which is ideal for simple pressing and holding functions in relatively clean environments. In particular the small diameters of 6 and 10 mm are perfect for the electronics industry and small parts assembly, where they simulate micro movements for testing control buttons, keyboards or similar.

Areas of applications

- Linear short stroke movements
- Pushing or pulling without any lateral loads
- Primary tasks such as pushing of buttons and clamping of small parts

Compact valve VUVG-S



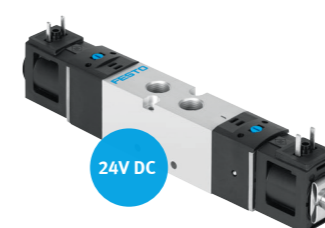
Get more power from a smaller design

Individual valves : inexpensive, highperformance and installed in a flash. They're the perfect choice for all high-speed applications requiring a particularly high flow rate combined with a compact size. They offer essential features at an attractive price and with the proven Festo quality. As part of the core product range, it is readily available worldwide from stock in large quantities.

Areas of applications

- Designed for small to medium flow
- Perfect for limited space requirements
- Suitable for majority of applications including: electronics, food and end line packaging, textile, mobile applications, light assembly, conveyor systems
- The lightweight aluminium housing is ideal for direct mounting on robot arms or cylinders

Sturdy valve VUVS-S



The sturdy valve for harsh environments

Flexible, modern, sturdy and durable quality. A comprehensive range of accessories. Numerous mounting options and easy operation. Pre-assembled or on a rail according to the customer's specifications. That is what today's valves should be! With essential features, the this series is part of the Festo core product range. Always in stock and delivered quickly, it also comes at an attractive price.

Areas of applications

- Single installations
- Conveyor divertors and stops
- Suitable for manifold mounting
- Basic valves with focused features for 24V DC

Regulator and filter regulator MS2



Extremely lightweight and compact with high flow rates

Advanced polymer materials make the compressed air regulator and filter regulators up to 50% lighter than competitive products, but extremely sturdy at the same time. The optimised design provides a very high flow rate performance, while the stable control behaviour ensures smooth processes. These strong, cost-efficient and lightweight components are ideal for use directly in the application and in the electronics industry.

Areas of applications

- Minimal space requirements
- Ideal for end-of-arm, small parts assembly and in the electronics industry
- Designed for use close to the process directly in the machine

Polyurethane tube PUN-H



Detect solid particles, moisture or oil in the line

PUN-H is the go-to-tube for a wide variety of applications including the exposure to wet environments, humidity and even outside thanks to its corrosion resistant properties. Combined with its high kink resistance, it's the ideal choice when selecting tubing for uninterrupted and reliable air supply. Thanks to its high quality base material, it is suitable for use both in the food industry and outdoors. Both transparent and non-transparent colours are available.

Areas of applications

- General pneumatic automation
- Used in the food zone
- Environments with high moisture levels, weather resistant and resistance to UV radiation (black colour)

The hallmarks of Festo products:

- Well designed
- Built-in reliability
- Easy to install
- Superb quality
- Quick delivery



Core Product Range

A star, a distinction, a promise: the best for your task. With the Festo core product range, you can choose from an extensive portfolio and benefit from high-quality components at particularly attractive prices.

Compact Mini Slide - DGST

Precise power unit

- High rigidity, precision and alignment
- Backlash-free piston rod/yoke connection
- Precise and resilient roller bearing guide
- Two sensor slots for sensing the slide position
- All connections on one side
- Simple design with symmetrical mounting interfaces
- Twin-piston drive
- Option for supply ports and sensor slots to be mirror-inverted
- Three types of integrated cushioning
- Slide and yoke plate as a single component
- High feed forces

Accessories for installation and operation:

- For centring loads and attachments on the slide
- Shock absorbers

Scan QR code to find out more

Size [mm]	6	8	10	12	16	20	25
Stroke [mm]	Cushioning E1: Elastic cushioning at both ends, no end-position adjustment						
10	8078828 ★	8078833 ★	8078839 ★	8078846 ★	8078853 ★	8078862 ★	8078872 ★
20	8078829 ★	8078834 ★	8078840 ★	8078847 ★	8078854 ★	8078863 ★	8078873 ★
30	8078830 ★	8078835 ★	8078841 ★	8078848 ★	8078855 ★	8078864 ★	8078874 ★
40	8078831 ★	8078836 ★	8078842 ★	8078849 ★	8078856 ★	8078865 ★	8078875 ★
50	8078832 ★	8078837 ★	8078843 ★	8078850 ★	8078857 ★	8078866 ★	8078876 ★
80		8078838 ★	8078844 ★	8078851 ★	8078858 ★	8078867 ★	8078877 ★
100			8078845 ★	8078852 ★	8078859 ★	8078868 ★	8078878 ★
125					8078860 ★	8078869 ★	8078879 ★
150					8078861 ★	8078870 ★	8078880 ★
200						8078871 ★	8078881 ★
Stroke [mm]	Cushioning P: Elastic cushioning at both ends, non-adjustable, with end-position adjustment						
10	8085105 ★	8085110 ★	8085116 ★	8085123 ★	8085130 ★	8085139 ★	8085149 ★
20	8085106 ★	8085111 ★	8085117 ★	8085124 ★	8085131 ★	8085140 ★	8085150 ★
30	8085107 ★	8085112 ★	8085118 ★	8085125 ★	8085132 ★	8085141 ★	8085151 ★
40	8085108 ★	8085113 ★	8085119 ★	8085126 ★	8085133 ★	8085142 ★	8085152 ★
50	8085109 ★	8085114 ★	8085120 ★	8085127 ★	8085134 ★	8085143 ★	8085153 ★
80		8085115 ★	8085121 ★	8085128 ★	8085135 ★	8085144 ★	8085154 ★
100			8085122 ★	8085129 ★	8085136 ★	8085145 ★	8085155 ★
125					8085137 ★	8085146 ★	8085156 ★
150					8085138 ★	8085147 ★	8085157 ★
200						8085148 ★	8085158 ★
Stroke [mm]	Cushioning Y12: Shock absorbers at both ends, self-adjusting, with end-position adjustment						
30	8085159 ★	8085162 ★	8085166 ★	8085171 ★	8085176 ★	8085183 ★	8085191 ★
40	8085160 ★	8085163 ★	8085167 ★	8085172 ★	8085177 ★	8085184 ★	8085192 ★
50	8085161 ★	8085164 ★	8085168 ★	8085173 ★	8085178 ★	8085185 ★	8085193 ★
80		8085165 ★	8085169 ★	8085174 ★	8085179 ★	8085186 ★	8085194 ★
100			8085170 ★	8085175 ★	8085180 ★	8085187 ★	8085195 ★
125					8085181 ★	8085188 ★	8085196 ★
150					8085182 ★	8085189 ★	8085197 ★
200						8085190 ★	8085198 ★

Please refer to the online catalogue → www.festo.com/catalogue/dgst

Guided Drive - DFM

Resilient!

- Choice of compressed air supply ports
- High rigidity
- Good protection against torsion
- Maintenance-free
- Minimal space requirement
- Drive and guide unit in one single housing
- Proximity switch can be integrated in the cylinder barrel
- Sturdy and precise
- High resistance to torques and transverse loads
- Effortlessly transports and lifts loads, powerfully and dynamically
- Great mounting flexibility in 4 directions

Accessories:

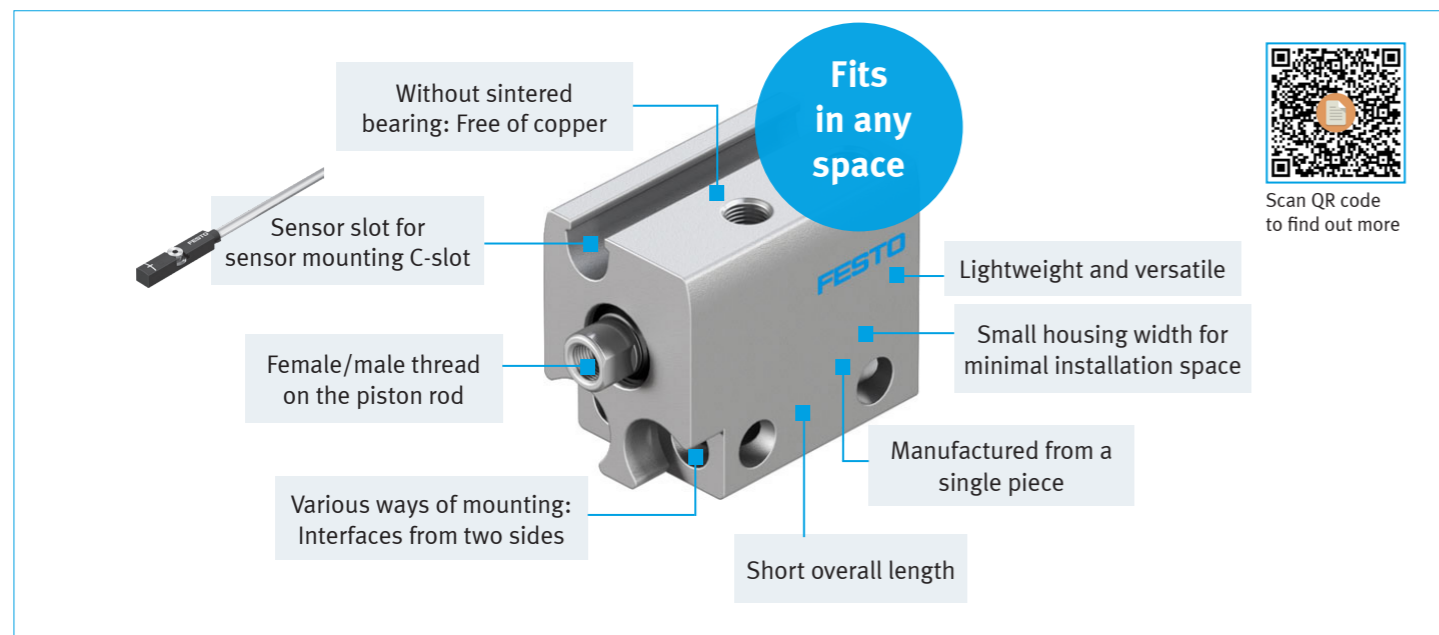
- Centring sleeves for housing and yoke

Scan QR code to find out more

Piston	6	10	12	16	20	25	32	40	50	63	
Port	M3		M5			G1/8		G1/4			
Stroke [mm]	Plain-bearing guide GF - high rigidity thanks to large-diameter guide rods and four plain-bearing bushes										
5	4149944 ★	4154768 ★									
10	4149945 ★	4154769 ★	170824 ★	170832 ★							
15	4149946 ★	4154770 ★									
20	4149947 ★	4154799 ★	170825 ★	170833 ★	170840 ★	170847 ★	170854 ★				
25			170826 ★	170834 ★	170841 ★	170848 ★	170855 ★	170864 ★	170871 ★	170878 ★	
30			170827 ★	170835 ★	170842 ★	170849 ★	170856 ★				
40			170828 ★	170836 ★	170843 ★	170850 ★	170857 ★				
50			170829 ★	170837 ★	170844 ★	170851 ★	170858 ★	170865 ★	170872 ★	170879 ★	
80			170830 ★	170838 ★	170845 ★	170852 ★	170859 ★	170866 ★	170873 ★	170880 ★	
100			170831 ★	170839 ★	170846 ★	170853 ★	170860 ★	170867 ★	170874 ★	170881 ★	
125							170861 ★	170868 ★	170875 ★	170882 ★	
160							170862 ★	170869 ★	170876 ★	170883 ★	
200							170863 ★	170870 ★	170877 ★	170884 ★	
Stroke [mm]	Recirculating ball bearing guide KF for applications involving torque loads										
10			170899 ★	170907 ★							
20			170900 ★	170908 ★	170915 ★	170922 ★	170929 ★				
25			170901 ★	170909 ★	170916 ★	170923 ★	170930 ★	170939 ★	170946 ★	170953 ★	
30			170902 ★	170910 ★	170917 ★	170924 ★	170931 ★				
40			170903 ★	170911 ★	170918 ★	170925 ★	170932 ★				
50			170904 ★	170912 ★	170919 ★	170926 ★	170933 ★	170940 ★	170947 ★	170954 ★	
80			170905 ★	170913 ★	170920 ★	170927 ★	170934 ★	170941 ★	170948 ★	170955 ★	
100			170906 ★	170914 ★	170921 ★	170928 ★	170935 ★	170942 ★	170949 ★	170956 ★	
125							170936 ★	170943 ★	170950 ★	170957 ★	
160							170937 ★	170944 ★	170951 ★	170958 ★	
200							170938 ★	170945 ★	170952 ★	170959 ★	

Note: Piston sizes also available in 80 and 100mm bore. Please refer to the online catalogue → www.festo.com/catalogue/dfm

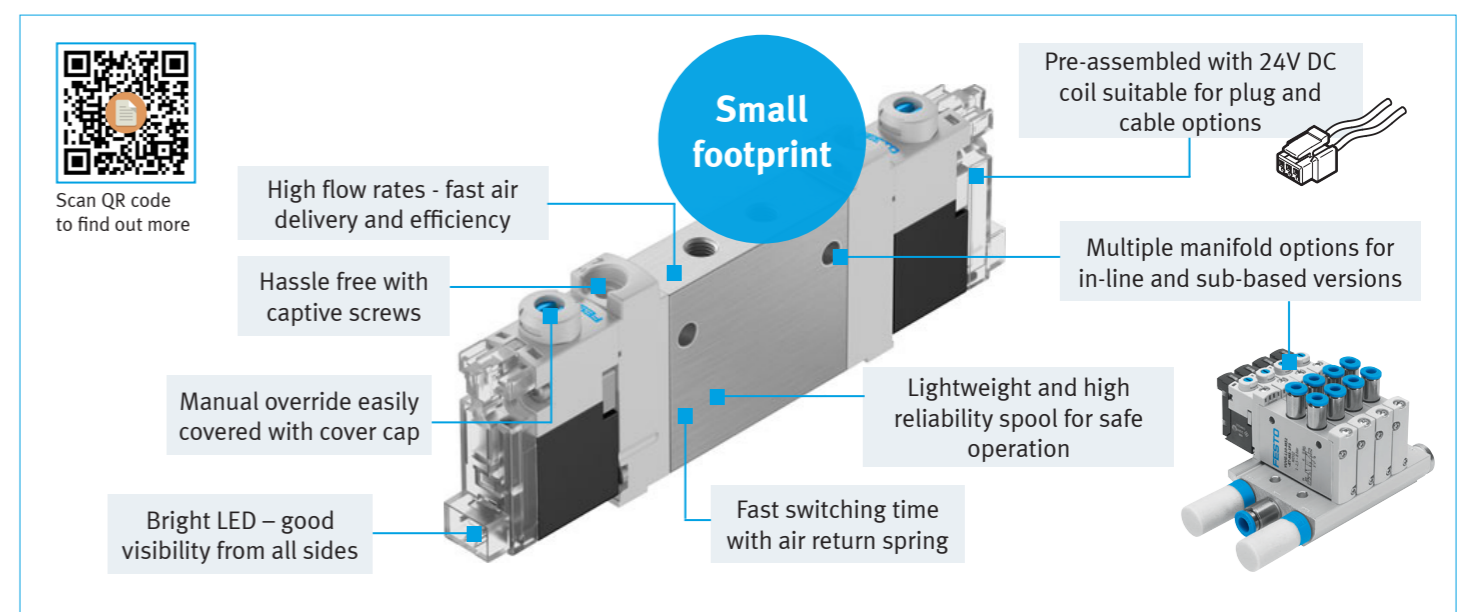
Compact Cylinders - ADN-S/AEN-S



Piston	Stroke [mm]	I - Piston rod with female thread	A - Piston rod with male thread		
ADN-S [Double-acting]					
6mm	Without position sensing				
	5	4886885 ★	ADN-S-6-5-I	8080598	ADN-S-6-5-A
	10	4886886 ★	ADN-S-6-10-I	8080596	ADN-S-6-10-A
	With position sensing				
	5	5173732 ★	ADN-S-6-5-I-A	8080597	ADN-S-6-5-A-A
	10	5173733 ★	ADN-S-6-10-I-A	8080595	ADN-S-6-10-A-A
10mm	Without position sensing				
	5	4887523 ★	ADN-S-10-5-I	8080589	ADN-S-10-5-A
	10	4887524 ★	ADN-S-10-10-I	8080588	ADN-S-10-10-A
	With position sensing				
	5	5177082 ★	ADN-S-10-5-I-A	8080587	ADN-S-10-5-A-A
	10	5177085 ★	ADN-S-10-10-I-A	8080590	ADN-S-10-10-A-A
AEN-S [Single-acting]					
6mm	Without position sensing				
	5	4984929 ★	AEN-S-6-5-I	8080593	AEN-S-6-5-A
	10	4984930 ★	AEN-S-6-10-I	8080594	AEN-S-6-10-A
	With position sensing				
5	5267300 ★	AEN-S-6-5-I-A	8080591	AEN-S-6-5-A-A	
10	5267301 ★	AEN-S-6-10-I-A	8080592	AEN-S-6-10-A-A	
10mm	Without position sensing				
	5	4891759 ★	AEN-S-10-5-I	8080583	AEN-S-10-5-A
	10	4891760 ★	AEN-S-10-10-I	8080586	AEN-S-10-10-A
	With position sensing				
	5	5269268 ★	AEN-S-10-5-I-A	8080584	AEN-S-10-5-A-A
	10	5269269 ★	AEN-S-10-10-I-A	8080585	AEN-S-10-10-A-A

Please refer to the online catalogue → www.festo.com/catalogue/adn-s

Compact Valves - VUVG-LK/BK [24V DC]



In-line valves - LK

Size [mm]	Width [mm]	Part No	Description	Part No	Description	Flow rate
With electrical sub-base R8 [3-pin]			With electrical sub-base H2 [2-pin]			
2 x 3/2-way with solenoid coil, Normally Closed, Pneumatic Spring 24V DC						
M5	10	8042542 ★	VUVG-LK10-T32C-AT-M5-1R8L-S	8042538 ★	VUVG-LK10-T32C-AT-M5-1H2L-S	180 l/min
M7	10	8042550 ★	VUVG-LK10-T32C-AT-M7-1R8L-S	8042546 ★	VUVG-LK10-T32C-AT-M7-1H2L-S	280 l/min
1/8	14	8042566 ★	VUVG-LK14-T32C-AT-G18-1R8L-S	8042562 ★	VUVG-LK14-T32C-AT-G18-1H2L-S	570 l/min
5/2-way with solenoid coil Single solenoid 24V DC						
M5	10	8042543 ★	VUVG-LK10-M52-AT-M5-1R8L-S	8042539 ★	VUVG-LK10-M52-AT-M5-1H2L-S	195 l/min
M7	10	8042551 ★	VUVG-LK10-M52-AT-M7-1R8L-S	8042547 ★	VUVG-LK10-M52-AT-M7-1H2L-S	340 l/min
1/8	14	8042567 ★	VUVG-LK14-M52-AT-G18-1R8L-S	8042563 ★	VUVG-LK14-M52-AT-G18-1H2L-S	660 l/min
5/2-way with solenoid coil Double solenoid 24V DC						
M5	10	8042544 ★	VUVG-LK10-B52-T-M5-1R8L-S	8042540 ★	VUVG-LK10-B52-T-M5-1H2L-S	195 l/min
M7	10	8042552 ★	VUVG-LK10-B52-T-M7-1R8L-S	8042548 ★	VUVG-LK10-B52-T-M7-1H2L-S	340 l/min
G1/8	14	8042568 ★	VUVG-LK14-B52-T-G18-1R8L-S	8042564 ★	VUVG-LK14-B52-T-G18-1H2L-S	660 l/min

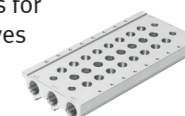
Sub-base valves - BK (connection via supply manifold)

Size [mm]	Width [mm]	Part No	Description	Part No	Description	Flow rate
With electrical sub-base R8 [3-pin]			With electrical sub-base H2 [2-pin]			
2 x 3/2-way with solenoid coil, NC Pneumatic Spring 24V DC						
M5/M7	10	8042558 ★	VUVG-BK10-T32C-AT-F-1R8L-S	8042554 ★	VUVG-BK10-T32C-AT-F-1H2L-S	160 l/min
1/8	14	8042574 ★	VUVG-BK14-T32C-AT-F-1R8L-S	8042570 ★	VUVG-BK14-T32C-AT-F-1H2L-S	350 l/min
5/2-way with solenoid coil single solenoid 24V DC						
M5/M7	10	8042559 ★	VUVG-BK10-M52-AT-F-1R8L-S	8042555 ★	VUVG-BK10-M52-AT-F-1H2L-S	160 l/min
1/8	14	8042575 ★	VUVG-BK14-M52-AT-F-1R8L-S	8042571 ★	VUVG-BK14-M52-AT-F-1H2L-S	380 l/min
5/2-way with solenoid coil double solenoid 24V DC						
M5/M7	10	8042560 ★	VUVG-BK10-B52-T-F-1R8L-S	8042556 ★	VUVG-BK10-B52-T-F-1H2L-S	160 l/min
1/8	14	8042576 ★	VUVG-BK14-B52-T-F-1R8L-S	8042572 ★	VUVG-BK14-B52-T-F-1H2L-S	380 l/min

Electrical connections

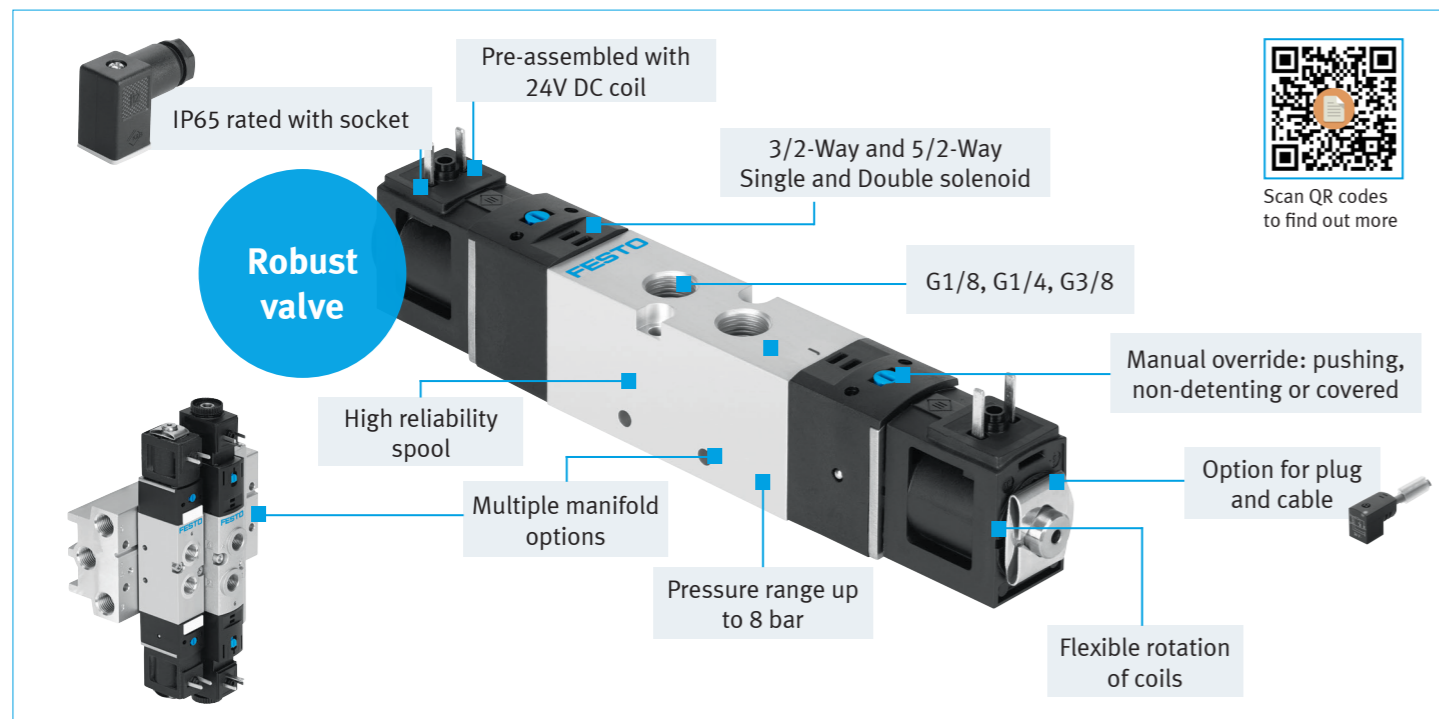
Connection	Description	Part No	Part No
H2	Plug socket with cable, 1.0 m length	566655 ★	NEBV-H1G2-KN-1-N-LE2
R8	M8 cable, 3-pin open end, 2.5 m length	541338 ★	NEBU-M8W3-K-2.5-LE3

Accessories:
Manifold options for 3/2 and 5/2 valves



Please refer to the online catalogue → www.festo.com/catalogue/vuvg-lk

Sturdy Valves - VUVS-LK [24V DC]



In-line valves - LK

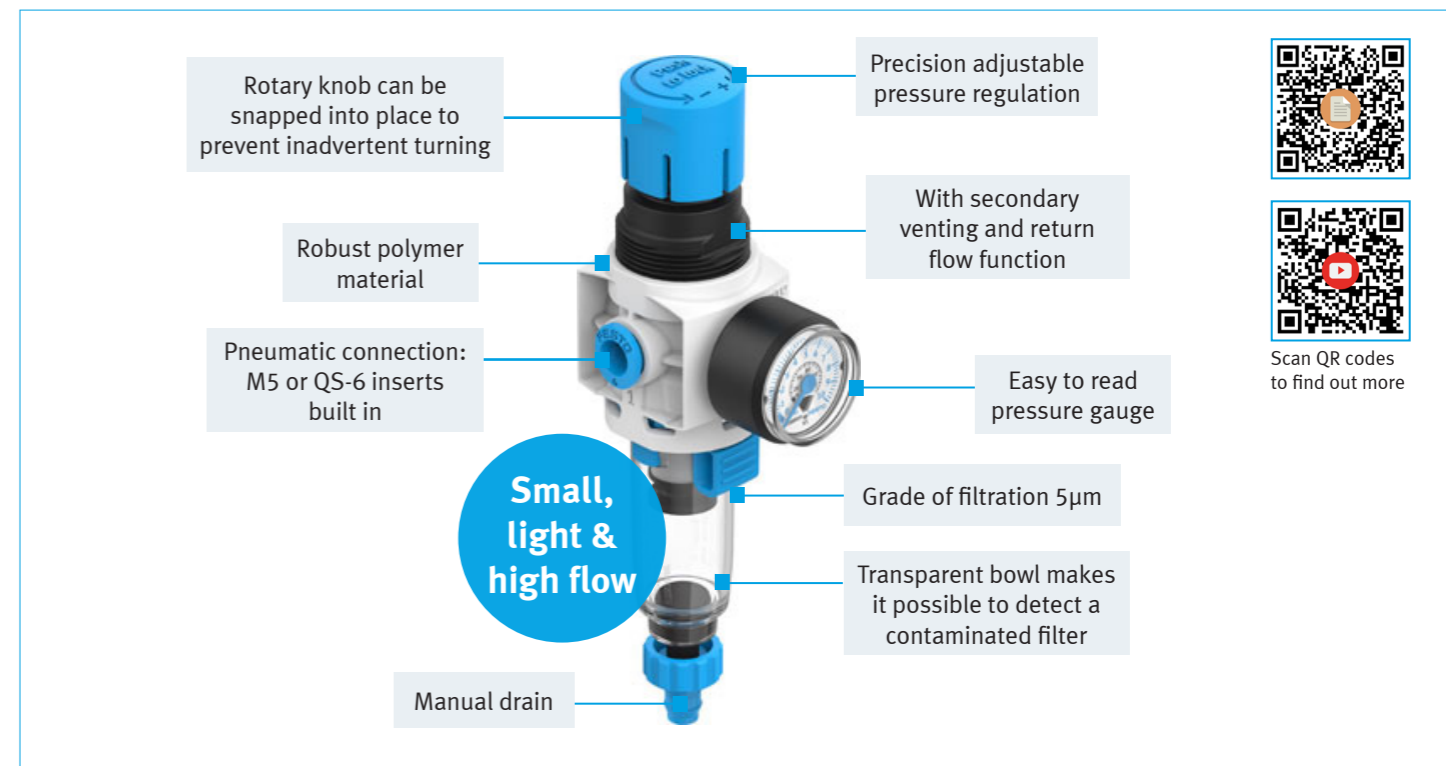
Connection size	G1/8	G1/4	G3/8
Valve width [mm]	20	25	30
Flow rate l/min	550	1,000	1,600
Temperature range [°C]	-5 ... +50		
Operating voltage	24V DC		
3/2-Way Valve	8043213 ★ VUVS-LK20-M32C-AD-G18-1C1-S	8043217 ★ VUVS-LK25-M52-AD-G14-1B2-S	8049880 ★ VUVS-LK30-M32C-AD-G38-1B2-S
5/2-Way Valve Single Solenoid	8043214 ★ VUVS-LK20-M52-AD-G18-1C1-S	8043218 ★ VUVS-LK25-M52-AD-G14-1B2-S	8049881 ★ VUVS-LK30-M52-AD-G38-1B2-S
5/2-Way Valve Double Solenoid	8043215 ★ VUVS-LK20-B52-D-G18-1C1-S	8043219 ★ VUVS-LK25-B52-D-G14-1B2-S	8049882 ★ VUVS-LK30-B52-D-G38-1B2-S
Plug socket	151687 ★ MSSD-EB	34431 ★ MSSD-F	34431 ★ MSSD-F
Plug socket with cable 2.5m length	151688 ★ KMEB-1-24-2,5-LED	30935 ★ KMF-1-24DC-2,5-LED	30935 ★ KMF-1-24DC-2,5-LED
Plug socket with cable 5m length	151689 KMEB-1-24-5-LED	30937 KMF-1-24DC-5-LED	30937 KMF-1-24DC-5-LED


Manifold - Compact manifold block VABM with seals and plugs included


3/2 - 2 position	576465 ★	8026297 ★	8026413 ★
3/2 - 4 position	576467 ★	8026299 ★	8026415 ★
3/2 - 6 position	576469 ★	8026301 ★	8026417 ★
3/2 - 8 position	576471 ★	8026303 ★	8026419 ★
3/2 - 10 position	576473 ★	8026305 ★	8026421 ★
5/2 - 2 position	576417 ★	8026261 ★	8026377 ★
5/2 - 4 position	576419 ★	8026263 ★	8026379 ★
5/2 - 6 position	576421 ★	8026265 ★	8026381 ★
5/2 - 8 position	576423 ★	8026267 ★	8026383 ★
5/2 - 10 position	576425 ★	8026269 ★	8026385 ★
Screw set	8069876 ★	8068789 ★	8068790 ★

Please refer to the online catalogue → www.festo.com/catalogue/vuvs-lk

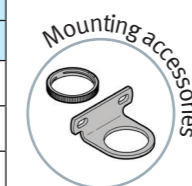
Regulators/Filter Regulators - MS2-LR/LFR



Regulator						
Type	Type	Size	Part No	Description	Flow rate	Weight
	Pressure regulation range 0.5 ... 7 bar, rotary knob with detent [Bar/psi]					
	MS2-LR	M5	8086628 ★	MS2-LR-M5-D6-AR-BAR-B	170 l/min	39.8 g
	MS2-LR	QS-6	8086638 ★	MS2-LR-QS6-D6-AR-BAR-B	350 l/min	36.6 g
	With pressure gauge, display unit [MPa]					
	MS2-LR	M5	8086636	MS2-LR-M5-D6-AR-MPA-B	170 l/min	39.8 g
	MS2-LR	QS-6	8086639	MS2-LR-QS6-D6-AR-MPA-B	350 l/min	36.6 g
	With adapter for EN pressure gauge 1/8, without pressure gauge					
	MS2-LR	M5	8086637	MS2-LR-M5-D6-A8-B	170 l/min	34.8 g
	MS2-LR	QS-6	8086640	MS2-LR-QS6-D6-A8-B	250 l/min	31.6 g

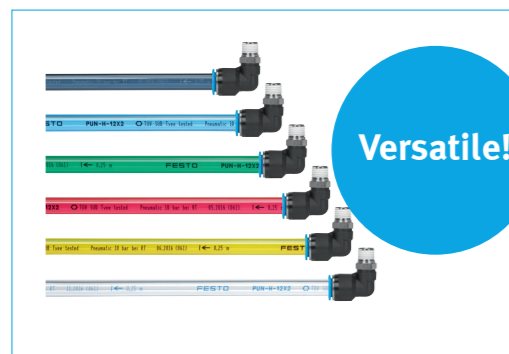
Filter Regulator						
Type	Type	Size	Part No	Description	Flow rate	Weight
	Pressure regulation range 0.5 ... 7 bar, rotary knob with detent with manual condensate drain, 5µm [Bar/psi]					
	MS2-LFR	M5	8086641 ★	MS2-LFR-M5-D6-AR-BAR-C-M-B	140 l/min	47.3 g
	MS2-LFR	QS-6	8086644 ★	MS2-LFR-QS6-D6-AR-BAR-C-M-B	310 l/min	45 g
	With pressure gauge, display unit [MPa]					
	MS2-LFR	M5	8086642	MS2-LFR-M5-D6-AR-MPA-C-M-B	140 l/min	47.3 g
	MS2-LFR	QS-6	8086645	MS2-LFR-QS6-D6-AR-MPA-C-M-B	310 l/min	45 g
	With adapter for EN pressure gauge 1/8, without pressure gauge					
	MS2-LFR	M5	8086643	MS2-LFR-M5-D6-A8-C-M-B	140 l/min	42.3 g
	MS2-LFR	QS-6	8086646	MS2-LFR-QS6-D6-A8-C-M-B	310 l/min	40 g

Accessories		
Type	Part No	Description
Filter cartridge 5µm	526818	LFP-D-MICRO-5M
Wall bracket	8087978 ★	MS2-WR
Knurled nut	8098037 ★	MS2-WRS




Please refer to the online catalogue → www.festo.com/catalogue/ms2

Polyurethane Tubing - PUN-H



Versatile!

- Sizes 2mm OD up to 16mm OD
- Highly flexible tubing
- Resistant to hydrolysis and microbes
- UV-resistant
- Food-safe
- FDA-listed material
- Kink-resistant
- Red, green and yellow tube also available
- DUO tube available in Blue & Black



Scan QR code to find out more

PUN-H - Versatile range of solid colours				
Non-translucent		Blue	Black	Silver
OD	PU mtrs]	BL	SW	SI
2mm	50		133039 ★ PUN-H-2X0,4-SW	
3mm	50	197382 ★ PUN-H-3X0,5-BL	197389 ★ PUN-H-3X0,5-SW	558277 ★ PUN-H-3X0,5-SI
	Bulk 500	558256 ★ PUN-H-3X0,5-BL-500	558249 ★ PUN-H-3X0,5-SW-500	558270 ★ PUN-H-3X0,5-SI-500
4mm	50	197383 ★ PUN-H-4X0,75-BL	197390 ★ PUN-H-4X0,75-SW	558278 ★ PUN-H-4X0,75-SI
	Bulk 500	558257 ★ PUN-H-4X0,75-BL-500	558250 ★ PUN-H-4X0,75-SW-500	558271 ★ PUN-H-4X0,75-SI-500
6mm	50	197384 ★ PUN-H-6X1-BL	197391 ★ PUN-H-6X1-SW	558279 ★ PUN-H-6X1-SI
	Bulk 500	558258 ★ PUN-H-6X1-BL-500	558251 ★ PUN-H-6X1-SW-500	558272 ★ PUN-H-6X1-SI-500
8mm	50	197385 ★ PUN-H-8X1,25-BL	197392 ★ PUN-H-8X1,25-SW	558280 ★ PUN-H-8X1,25-SI
	Bulk 400	558259 ★ PUN-H-8X1,25-BL-400	558252 ★ PUN-H-8X1,25-SW-400	558273 ★ PUN-H-8X1,25-SI-400
10mm	50	197386 ★ PUN-H-10X1,5-BL	197393 ★ PUN-H-10X1,5-SW	558281 ★ PUN-H-10X1,5-SI
	Bulk 300	558260 ★ PUN-H-10X1,5-BL-300	558253 ★ PUN-H-10X1,5-SW-300	558274 ★ PUN-H-10X1,5-SI-300
12mm	50	197387 ★ PUN-H-12X2-BL	197394 ★ PUN-H-12X2-SW	558282 ★ PUN-H-12X2-SI
	Bulk 200	558261 ★ PUN-H-12X2-BL-200	558254 ★ PUN-H-12X2-SW-200	558275 ★ PUN-H-12X2-SI-200
14mm	50	570386 ★ PUN-H-14X2-BL	570387 ★ PUN-H-14X2-SW	
16mm	50	197388 ★ PUN-H-16X2,5-BL	197395 ★ PUN-H-16X2,5-SW	558283 ★ PUN-H-16X2,5-SI
	Bulk 100	558262 ★ PUN-H-16X2,5-BL-100	558255 ★ PUN-H-16X2,5-SW-100	558276 ★ PUN-H-16X2,5-SI-100

PUN-H - Easy to detect oil, moisture in the line!				
Translucent		Blue	Black	Natural
OD	PU [mtrs]	BL	SW	NT
2mm	50			133038 ★ PUN-H-2X0,4-NT
3mm	50			197375 ★ PUN-H-3X0,5-NT
	Bulk 500			558263 ★ PUN-H-3X0,5-NT-500
4mm	50	8048671 ★ PUN-H-4X0,75-TBL	8048673 ★ PUN-H-4X0,75-TSW	197376 ★ PUN-H-4X0,75-NT
	Bulk 500	8048672 ★ PUN-H-4X0,75-TBL-500	8048674 ★ PUN-H-4X0,75-TSW-500	558264 ★ PUN-H-4X0,75-NT-500
6mm	50	8048681 ★ PUN-H-6X1-TBL	8048683 ★ PUN-H-6X1-TSW	197377 ★ PUN-H-6X1-NT
	Bulk 500	8048682 ★ PUN-H-6X1-TBL-500	8048684 ★ PUN-H-6X1-TSW-500	558265 ★ PUN-H-6X1-NT-500
8mm	50	8048691 ★ PUN-H-8X1,25-TBL	8048693 ★ PUN-H-8X1,25-TSW	197378 ★ PUN-H-8X1,25-NT
	Bulk 400	8048692 ★ PUN-H-8X1,25-TBL-400	8048694 ★ PUN-H-8X1,25-TSW-400	558266 ★ PUN-H-8X1,25-NT-400
10mm	50	8048701 ★ PUN-H-10X1,5-TBL	8048703 ★ PUN-H-10X1,5-TSW	197379 ★ PUN-H-10X1,5-NT
	Bulk 300	8048702 ★ PUN-H-10X1,5-TBL-300	8048704 ★ PUN-H-10X1,5-TSW-300	558267 ★ PUN-H-10X1,5-NT-300
12mm	50	8048711 ★ PUN-H-12X2-TBL	8048713 ★ PUN-H-12X2-TSW	197380 ★ PUN-H-12X2-NT
	Bulk 200	8048712 ★ PUN-H-12X2-TBL-200	8048714 ★ PUN-H-12X2-TSW-200	558268 ★ PUN-H-12X2-NT-200
14mm	50			570388 ★ PUN-H-14X2-NT
16mm	50			197381 ★ PUN-H-16X2,5-NT
	Bulk 100			558269 ★ PUN-H-16X2,5-NT-100

Please refer to the online catalogue → www.festo.com/catalogue/pun-h

Online services and support tools provide online assistance

You can find all the important services and tools online at any time, from helpful video tutorials to comprehensive information about our products and software. They are available to you whenever you need them and wherever you are. All the information can be accessed 24 hours a day.



Online engineering services

The quick and easy way to your goal. The productivity circle will always point you to the right services and software tools from Festo. From the Product Finder and configuration to CAD downloads, you will find lots of tools that make your work quicker and easier. So you have a virtual method to design your systems, whenever and wherever you are.

→ [To our services](#)



All the product information at your fingertips

In the Support Portal you will find all the important information: documentation on commissioning, information about spare parts, instructions manuals and much more.

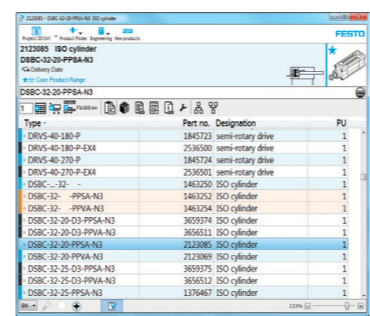
→ [To the Support Portal](#)



Video tutorials: watch and apply straight away

Our YouTube channel “Festo Service“ shows you how you can configure, repair, commission and adapt Festo products. Our tutorials are a perfect complement to our technical hotline. They will show you around the clock how you can carry out work on components correctly and directly.

→ [To our YouTube channel](#)



QuickSearch plus tool

When you know the part number or description of the parts you need this is the fastest way to access all the information you need including: CAD files, EPLAN data, product accessories, operating instructions, spare parts.

→ [Download now](#)



Convenient purchasing in the Online Shop

In our Online Shop you will find 35,000 components including electric drives, pneumatic automation, control technology, software and valve terminals. And of course you can order around the clock.

→ [To the Online Shop](#)



Singapore

Festo Pte. Ltd.

6 Kian Teck Way
628754
Tel: +65 6285 8585



Indonesia

PT. Festo

Jl. Tekno V blok A/ 1 sektor 11
Kawasan Industri BSD
Serpong - Tangerang 15314
Banten
Tel: +62 0804 1 2 33786



Malaysia

Festo Sdn Bhd

14A, Jalan Teknologi,
Taman Sains Selangor 1,
Kota Damansara,
47810 Petaling Jaya,
Selangor
Tel: +60 3 6144 1122

303-4-30 Krystal Point
Jalan Sultan Azlan Shah
11900 Penang
Tel: +60 3 6144 1122



Philippines

Festo Inc.

KM 18, West Service Road
South Superhighway
1700 Paranaque City
Metro Manila
Tel: +63 1800 10 12 33786



Thailand

Festo Ltd.

200,202 Kanchanapisek Road
Ramintra Khannayao
Bangkok 10230
Thailand
Tel: +66 1 800 019 051



Vietnam

Festo Co., Ltd

Floor 2, HQ Tower, No. 9,
Tran Nao Street, Binh An Ward,
District 2, Ho Chi Minh City, Viet Nam
Tel: +84 (28) 3514 5600
Fax: + 84 (28) 3514 5601

Room 407, Floor 4,
Ford Thang Long Building,
105 Lang Ha Str., Dong Da Dist., Ha Noi.
Tel: +84 (24) 32001624 / 32001584



Products for Your Everyday Automation Needs: Festo quality at attractive prices covering your standard automation tasks.

Connect with Us

