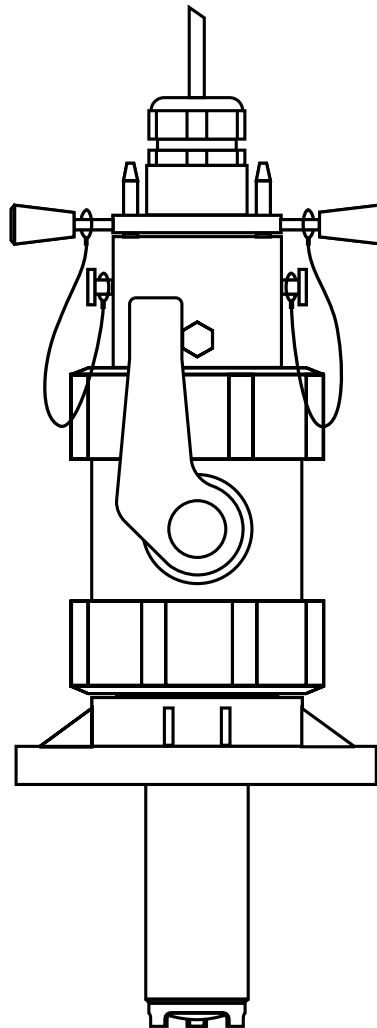


Retractable Assembly for Oxygen Measurement profit COA 461

Retractable assembly for sensors COS 3/COS 3S and COS 4



The use of retractable assemblies is very advantageous for oxygen measurement in pipes and tanks. These assemblies permit sensor checking, removal and cleaning without interrupting the process, thereby guaranteeing safe and reliable measurement.

Areas of application

- Water and waste water treatment
- Drinking water
- Surface water
- Fish farming

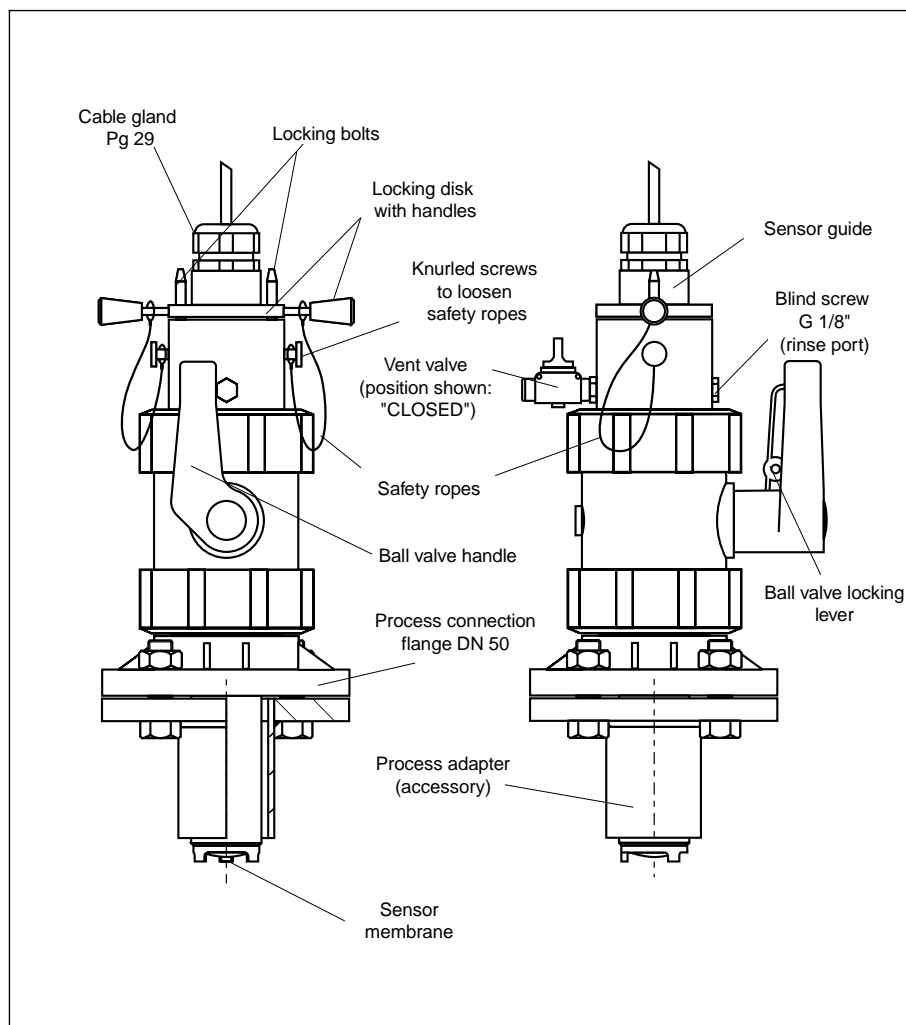
Benefits at a glance

Safe segregation from the process is assured by the following design features:

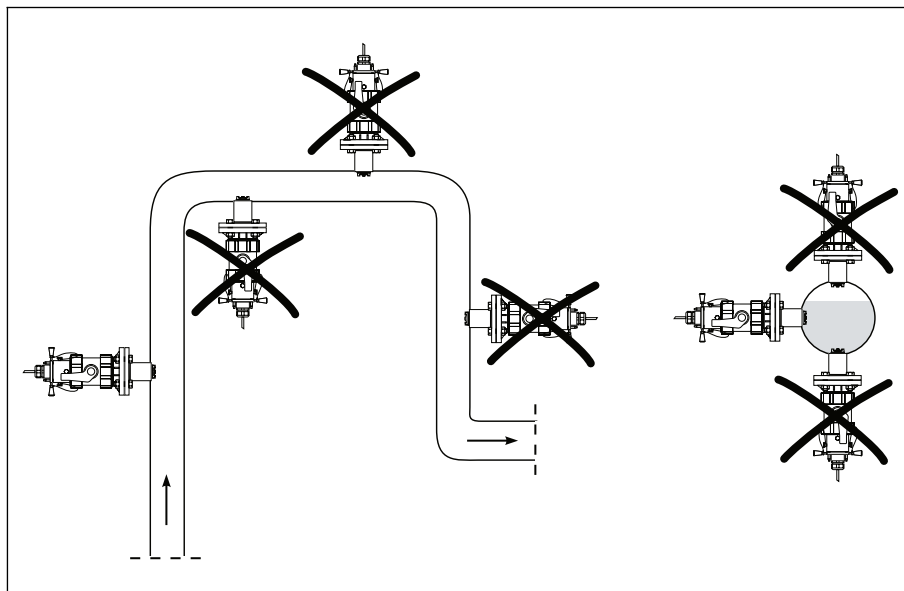
- Ball valve with locking handle
- Guide tube that holds the sensor is fixed in place by locking disk and locking bolt
- Available with fitting for weld-mounting
- Sensor can be cleaned while mounted thanks to rinse connector
- Sealing water can be supplied through rinse port during sensor retraction
- Manual operation; functions without power supply and control system



Design



Installation



Installation and application notes

Install the COA 461 with the built-in oxygen sensor in places with uniform flow rates if at all possible. The pipe diameter should be no less than $\varnothing 80$. Optimal mounting conditions are achieved with the process adapter (available as an accessory).

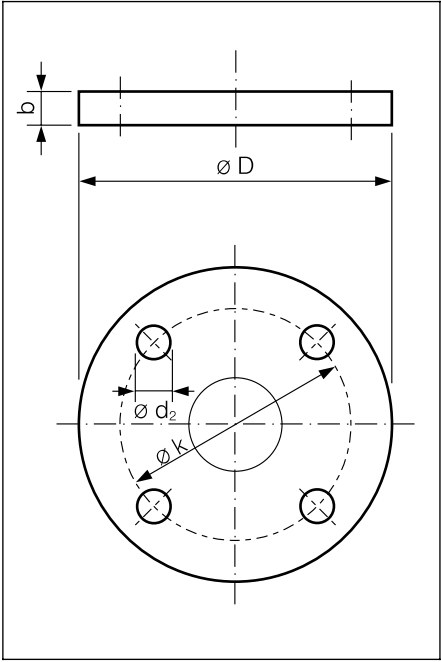
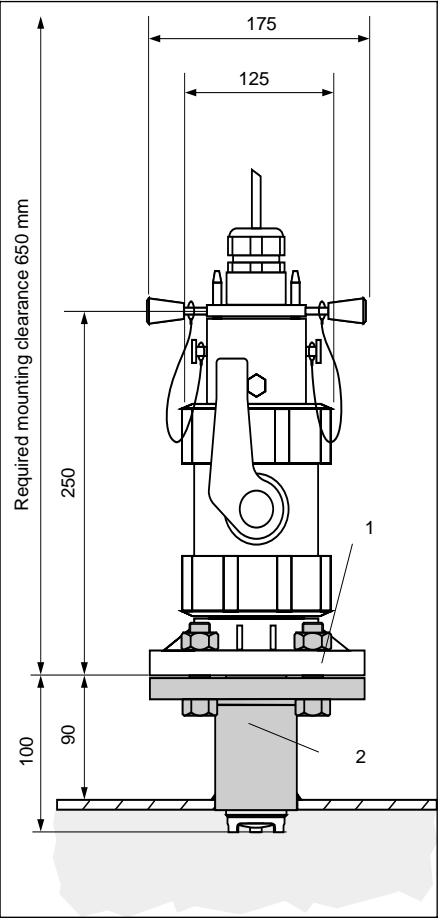
Caution:

Do not install the assembly in places where air is likely to collect, where foam bubbles may form or where sedimentation of medium constituents is possible. Inaccurate measurement may result if the sensor is not completely immersed in the medium or if deposits cover the membrane.

Dimensions

Figure on left:
Dimensions of
Probit COA 461
1 Process connection
DN 50 DIN flange or
2" ANSI
2 Process adapter
(accessory)

Figure on right:
Flange dimensions for
COA 461

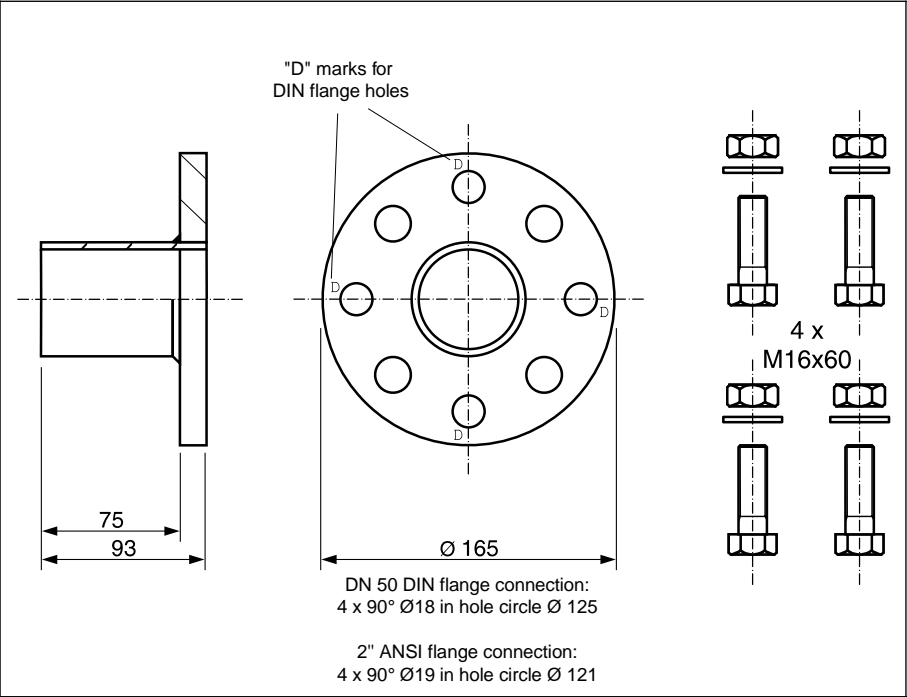


	DN 50 (mm)	ANSI 2" (mm)
$\varnothing D$	165	165
$\varnothing k$	125	121
$\varnothing d_2$	18	19
b	18	18

Accessories

- ☐ Process adapter:
Welding socket for pipe diameters of
ID \varnothing 80 mm or larger, complete with
DN 50 / 2" ANSI combination flange,
flange seal, 4 M16x60 bolts, 4 M16
nuts and 4 M16 washers. Available
in stainless steel 1.4571, PVC or PP.

Process adapter: DN 50 / 2" ANSI welding socket	Material	Order number
	Stainless steel 1.4571	50080249
	Polyvinyl chloride PVC	50080250
	Polypropylene PP	50080251



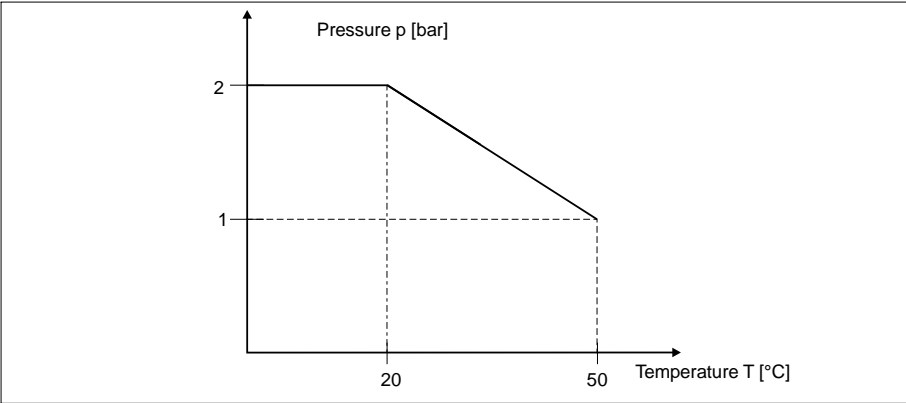
Process adapter for
pipe diameters of
80 mm or more

Technical data

Materials in contact with medium	stainless steel 1.4571
O-ring seals in contact with medium	EPDM / Viton
Dimensions of O-rings in sensor guide	ID x W: 48.20 x 2.62
Dimensions of O-rings in sensor mounting sleeve	ID x W: 41.00 x 1.78
	ID x W: 39.34 x 2.62
Locking disk, bolts	stainless steel
Safety ropes	stainless steel 1.4301, tensile strength 200 kp
Process connection	DIN flange DN 50 / 2" ANSI flange
Process pressure	max. 2 bar at 20 °C or max. 1 bar at 50 °C
Temperature	max. 50 °C
Rinse connections	G 1/8"
Dimensions:	
Sensor moved into medium	installation height: 300 mm
Sensor retracted	required clearance above flange: 650 mm
Immersion depth	100 mm from lower flange edge to beginning of sensor tip
Weight	approx. 3 kg
Sensor installation	G 1"

Subject to modifications.

Temperature/pressure
specifications for
COA 461 assembly



How to order

Retractable assembly Probit COA 461

Version / mounting type

A Process connection DIN flange DN 50

B Process connection 2" ANSI flange

O-ring seals

1 Material EPDM

2 Material Viton

COA 461-

← complete order code

Endress+Hauser GmbH+Co.
- Instruments International -
P.O. Box 22 22
D-79574 Weil am Rhein
Tel. (0 76 21) 9 75 - 02
Fax (0 76 21) 97 53 45