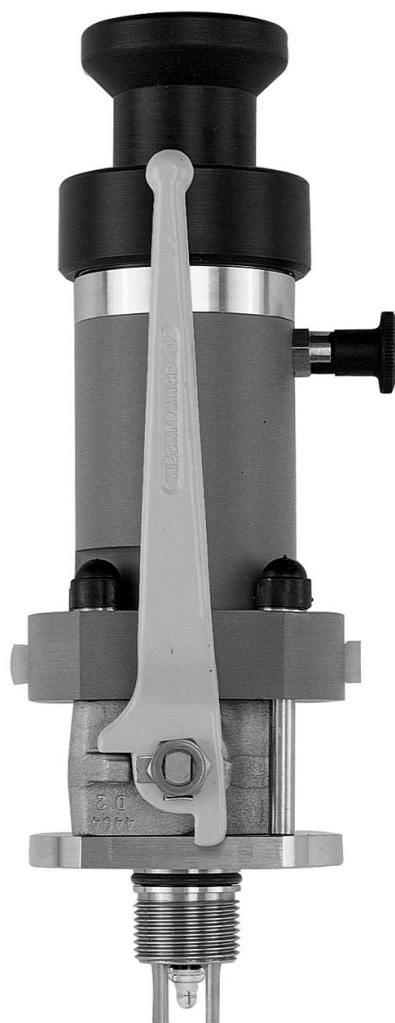


Process assembly for pH/redox measurement *profit CPA 461*

Retractable assembly for one pH or redox combination electrode



Measurement of pH and Redox value under process conditions using glass electrodes requires assembly systems of the highest quality and reliability. The Probfit process assembly ensures a maximum electrode life time, reduced maintenance effort and a reliable and precise measurement even under high pressures and temperatures.

Description

The retractable assembly Probfit CPA 461 allows a pH/Redox combination electrode to be withdrawn from the process medium manually, and to isolate it safely.

The electrode is built into a stainless steel piston. After releasing a safety catch the piston can be pulled back with the electrode, and the built-in ball valve can then be closed.

A guide rod with damping allows the assembly to be operated safely under process conditions.

Benefits at a glance

- Retractable assembly for installation and removal of a pH/Redox combination electrode under process conditions
- Allows calibration, cleaning and maintenance under process conditions
- Shock-resistant tabs at the end of the piston offer mechanical protection of the electrode
- Installation using a welding socket G 1" made of stainless steel 1.4571
- For use with a 225 mm long gel-filled pH/Redox combination electrode

Operating principle

Flushing, calibrating, wetting

When retracted, the electrode is located in an electrode chamber situated above the ball valve.

Cleaning and calibration solution can be fed into this chamber via NPT screw connections.

Function

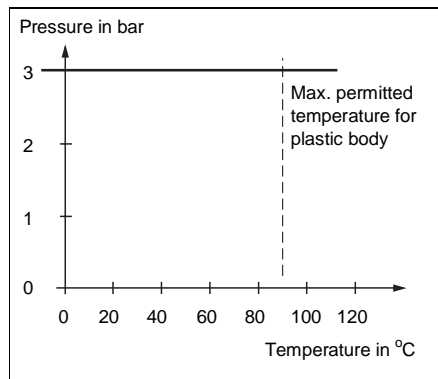
Ball valve closed:

Cleaning of measuring chain;
calibration and wetting of electrode.

Ball valve open:

Forward flushing of all parts in contact with medium including ball valve.

Pressure and temperature operating range of Probit CPA 461

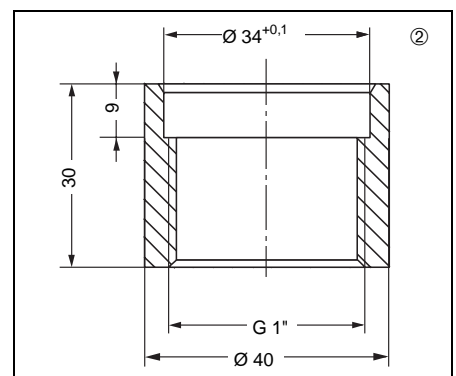
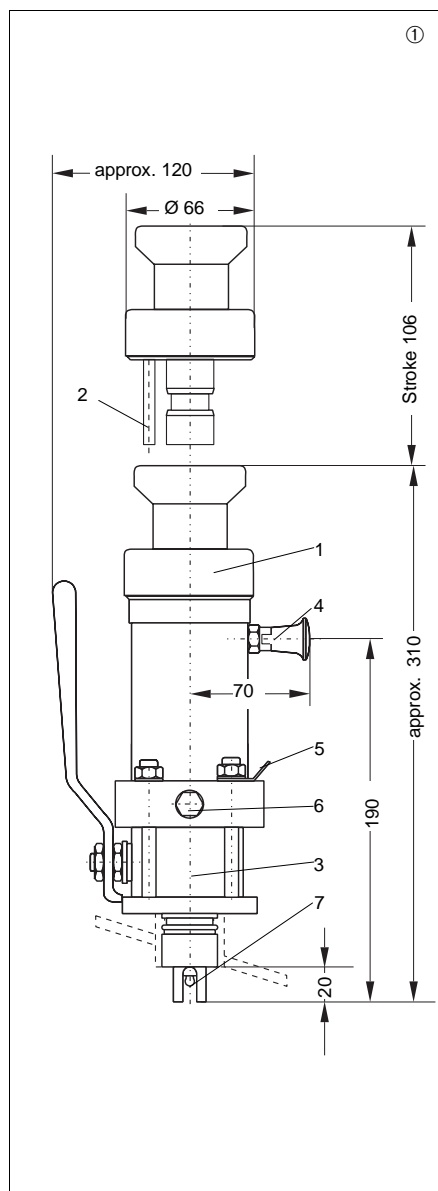


The Probit CPA 461 can be used up to 3 bar and 90 °C.

Dimensions

- ① Dimensioned drawing
Probit CPA 461
- 1 Closing cap
 - 2 Damper
 - 3 Ball valve
 - 4 Safety catch
 - 5 PM connection
 - 6 Dummy plug for flushing connection
1/8" NPT
 - 7 Electrode

- ② Welding socket G 1"



Technical data

| | |
|---|--------------------------------|
| Materials in contact with the medium | |
| Piston and shock protection | stainless steel 1.4571 |
| Ball valve | stainless steel 1.440 and PTFE |
| O-rings | EPDM |
| Assembly body | PVC-C |
| Installation | |
| Welding socket G 1" | stainless steel 1.4571 |
| Flushing connections | 2 x 1/2" NPT |
| Operating pressure and temperature | max. 3 bar and 90 °C |
| Electrode mounting | via Pg 13.5 thread |
| Electrode shaft length | 225 mm, diameter 12 mm |
| Weight | approx. 6 kg |

Subject to modifications.

Accessories

| | |
|---|-----------|
| <input type="checkbox"/> Welding socket G 1" consists of stainless steel 1.4571 | 50016187 |
| <input type="checkbox"/> Dummy plug consists of stainless steel 1.4571 | 50028634 |
| <input type="checkbox"/> pH/Redox combination electrode Orbisint | CPS 11/12 |
| <input type="checkbox"/> Connecting cable | |
| – for pH/Redox combination electrodes | CPK 1 |
| – for pH/Redox combination electrodes with integrated Pt 100 | CPK 7 |

How to order

pH retractable assembly Probit CPA 461

O-ring material

1

O-ring material: EPDM



CPA 461-



⇐ complete order code

Supplementary documentation

- ☐ Technical Information
 - Orbisint CPS 11/12/13
 - TI 028C/07/en

50054649

Endress+Hauser GmbH+Co.
- Instruments International -

P.O. Box 22 22
D-79574 Weil am Rhein
Tel. (0 76 21) 9 75 - 02
Fax (0 76 21) 97 53 45

Endress+Hauser
Nothing beats know-how

