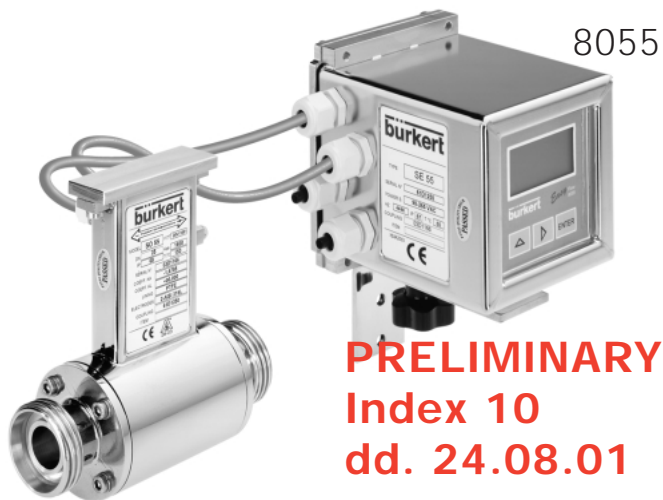


# Full Bore Magflowmeter for Easy Continuous or Batch Control



8055

**PRELIMINARY  
Index 10  
dd. 24.08.01**

Picture showing a Sanitary Version of Type 8055 (Fitting S055 + Electronic SE55)

This magflowmeter with large graphic display is designed for applications with a minimum conductivity of 5 s/cm. The 8055 can be programmed locally with the 3 key pads or by computer with a serial interface RS485.

With the integrated batch controller and Burkert valves, a decentralized control loop can be established - Easy LINK.

Type 8055 consists of a fitting S055 and the electronic SE55.

## Process Specification

Pipe diameter	DN 3 up to DN 100
Sanitary	DN 3 up to DN 20
Low flow	DN 25 up to DN 100
General purpose	(up to DN 2000 on request)
Measuring range	
Sanitary	10 l/h up to 280 m <sup>3</sup> /h
Low flow	10 l/h up to 12'500 l/h
General purpose	0.72 m <sup>3</sup> /h up to 280 m <sup>3</sup> /h
	(up to 113'000 m <sup>3</sup> /h on request)
Accuracy	± 0.2% (of range)
Minimum conductivity	5 µS/cm
Process connection	
Sanitary	Sanitary (DIN11851)
	(others on request)
Low flow	Threaded
	(others on request)
General purpose	Flanged (UNI)
	(others on request)
Body materials	
Sanitary sensor	Stainless Steel 304
	(Stainless Steel 316 on request)
Low flow sensor	Stainless Steel 304
General purpose sensor	Carbon Steel
	(Stainless Steel 304 on request)
Controller	Carbon Steel or St. Steel 304
Electrodes material	Stainless Steel 316L
	(others on request)
Lining material	
Sanitary	PTFE
Low flow	PTFE
General purpose	Polypropylene
	(others on request)

## Electrical Specifications

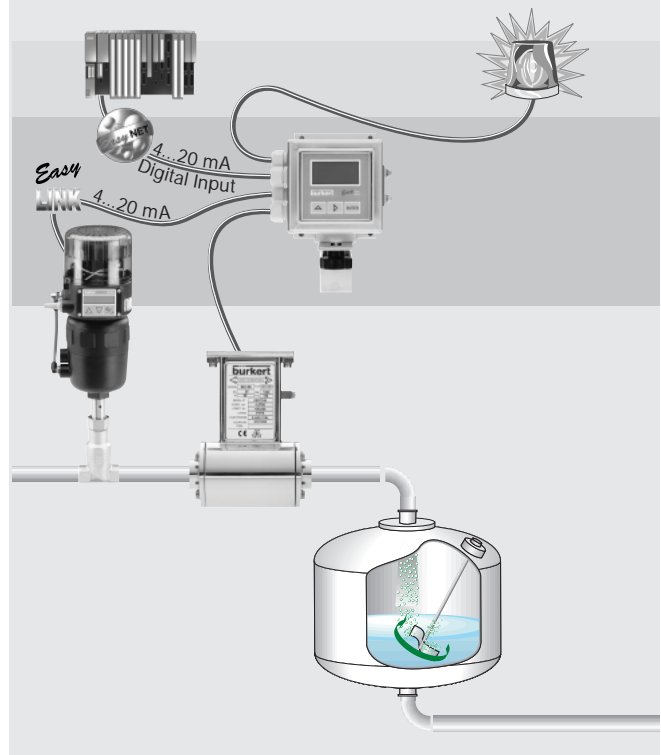
Voltage supply	90-265 VAC
	(others on request)
Outputs	
Current	Up to 2 0/4...20mA outputs
Pulse	Up to 2 1250 Hz or 12.5 kHz
	(40 VDC, 100 mA)
Transistor	Up to 4 transistors
	(40 VDC, 100 mA)
Relay	Up to 2 relays
	(250 VAC, 2 A)
Serial interface	RS485
Input	1 Digital input
	(0 up to 40 VDC)
Electrical Connections	Terminal blocks

## Full Bore Magflowmeter

- ✓ Large graphic display
- ✓ Integrated batch controller and data logger
- ✓ Sanitary versions for food & beverage applications
- ✓ CIP (clean in place)
- ✓ Easy LINK due to relays

## Application: Continuous and Batch Control

- Water treatment
- Food & beverage



## Environment Specifications

Fluid temperature range	
PTFE lining	-20°C up to +150°C
PP lining	0°C up to +60°C
Ambient temperature range	-20 up to +60°C
Fluid pressure max.	PN16
Enclosure	
Sensor	IP68
Controller	IP67

## Standards

EMI	• EN55011 (Group 1, Class B)
	• IEC1000-4-2/3/4/5/6/11
Safety	EN61010

# Full Bore Magflowmeter for Easy Continuous or Batch Control

## Specifications - Ordering Chart for Electronics (Other Versions on Request)

### Display and Electronic Type SE55 - for Fitting Type S055 (below)

Voltage supply	Input	Output	Serial interface	Material	Item-No.
90 - 265 VAC	1 Digital	0/4...20 mA, 2 transistors, pulse (1250 Hz)	RS 485	SS 304	448 478 J
90 - 265 VAC	1 Digital	0/4...20 mA, 2 transistors, pulse (1250 Hz)	RS 485	Carbon Steel	448 479 K

## Specifications - Ordering Chart (Other Versions on Request) for Fitting Type S055

### Stainless Steel Fitting Type S055 - Sanitary Version

Orifice DN [mm]	Process connection	Flow rate - range [m³/h]	Body material	Electrodes material	Lining material	Item-No.
25	DIN 11851	0.72 - 18.0	SS 304	SS 316L	PTFE	448 480 H
32	DIN 11851	1.60 - 29.0	SS 304	SS 316L	PTFE	448 481 W
40	DIN 11851	1.80 - 45.0	SS 304	SS 316L	PTFE	448 482 X
50	DIN 11851	2.88 - 72.0	SS 304	SS 316L	PTFE	448 483 Y
65	DIN 11851	4.80 - 120.0	SS 304	SS 316L	PTFE	448 484 Z
80	DIN 11851	7.20 - 180.0	SS 304	SS 316L	PTFE	448 485 S
100	DIN 11851	11.20 - 280.0	SS 304	SS 316L	PTFE	448 486 T

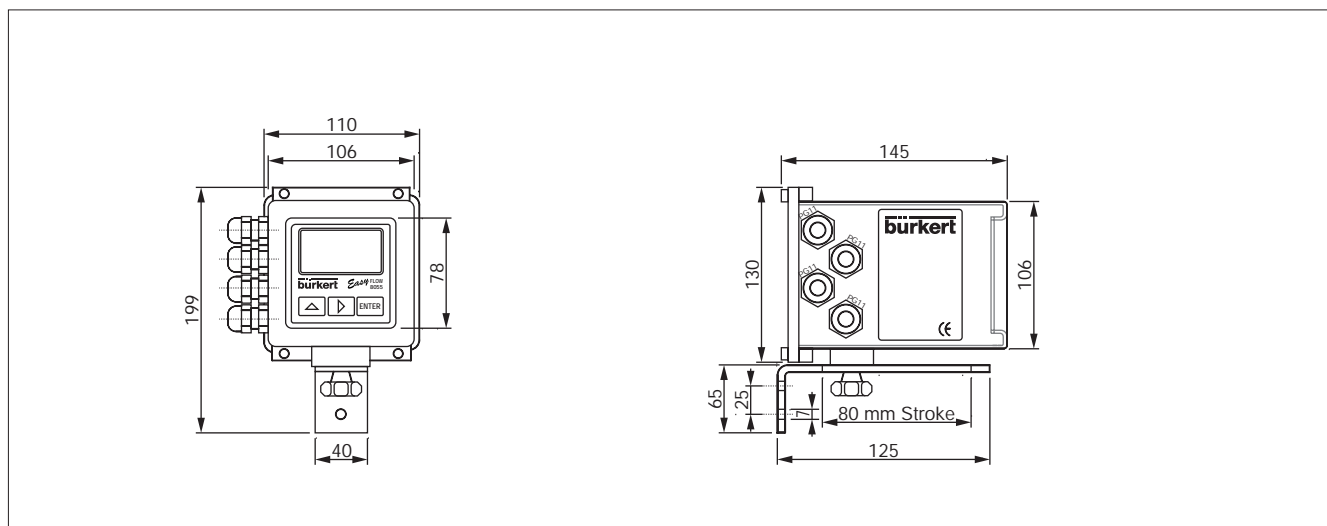
### Stainless Steel Fitting Type S055 - Low Flow Version

Orifice DN [mm]	Process connection	Flow rate - range [l/h]	Body material	Electrodes material	Lining material	Item-No.
3	Male threads, UNI 338	10.0 - 250.0	SS 304	SS 316L	PTFE	448 487 U
6	Male threads, UNI 338	40.0 - 1'000.0	SS 304	SS 316L	PTFE	448 488 D
10	Male threads, UNI 338	120.0 - 3'000.0	SS 304	SS 316L	PTFE	448 489 E
15	Male threads, UNI 338	240.0 - 6'000.0	SS 304	SS 316L	PTFE	448 490 B
20	Male threads, UNI 338	500.0 - 12'500.0	SS 304	SS 316L	PTFE	448 491 Y

### Carbon Steel Fitting Type S055 - General Purpose Version

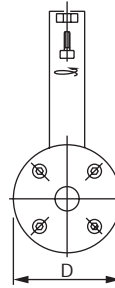
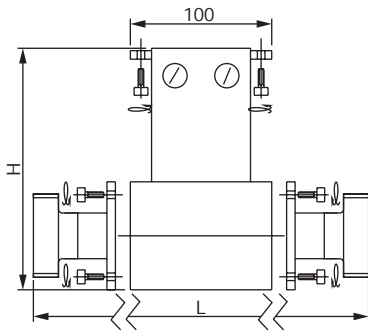
Orifice DN [mm]	Process connection	Flow rate - range [m³/h]	Body material	Electrodes material	Lining material	Item-No.
25	Flanges, UNI 2223	0.72 - 18.0	Carbon Steel	SS 316L	PP	448 492 Z
32	Flanges, UNI 2223	1.60 - 29.0	Carbon Steel	SS 316L	PP	448 493 S
40	Flanges, UNI 2223	1.80 - 45.0	Carbon Steel	SS 316L	PP	448 494 T
50	Flanges, UNI 2223	2.88 - 72.0	Carbon Steel	SS 316L	PP	448 495 U
65	Flanges, UNI 2223	4.80 - 120.0	Carbon Steel	SS 316L	PP	448 496 V
80	Flanges, UNI 2223	7.20 - 180.0	Carbon Steel	SS 316L	PP	448 497 W
100	Flanges, UNI 2223	11.20 - 280.0	Carbon Steel	SS 316L	PP	448 498 F

## Dimensions [mm] Electronic Type SE55



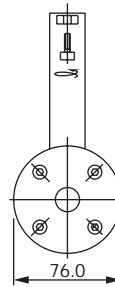
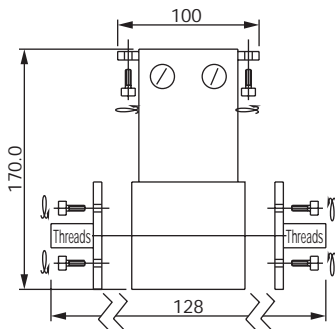
# Full Bore Magflowmeter for Easy Continuous or Batch Control

## Dimensions [mm] Fitting Type S055 Sanitary



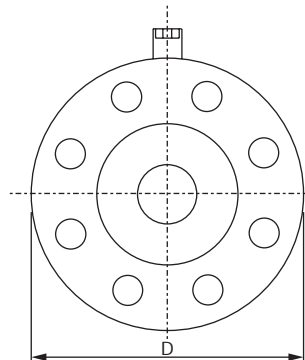
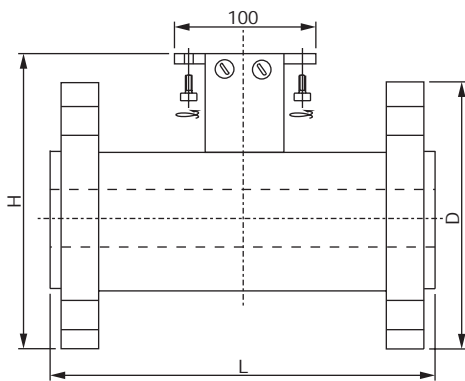
Orifice DN	D	H	L
25	76	170	180
32	76	170	180
40	76	170	180
50	114	208	180
65	140	234	200
80	140	234	200
100	168	262	200

## Dimensions [mm] Fitting Type S055 Low Flow



Orifice DN	Threads [inch]
3	1/4
6	3/8
10	1/2
15	3/4
20	1

## Dimensions [mm] Fitting Type S055 General Purpose



Orifice DN	D	H	L
25	115	185	200
32	140	203	200
40	150	213	200
50	165	228	200
65	185	248	200
80	200	263	200
100	220	283	250

In case of special application requirements, please consult for advice.

We reserve the right to make technical changes without notice.  
012-GB/ 1-0226

## Full Bore Magflowmeter for Easy Continuous or Batch Control

8055